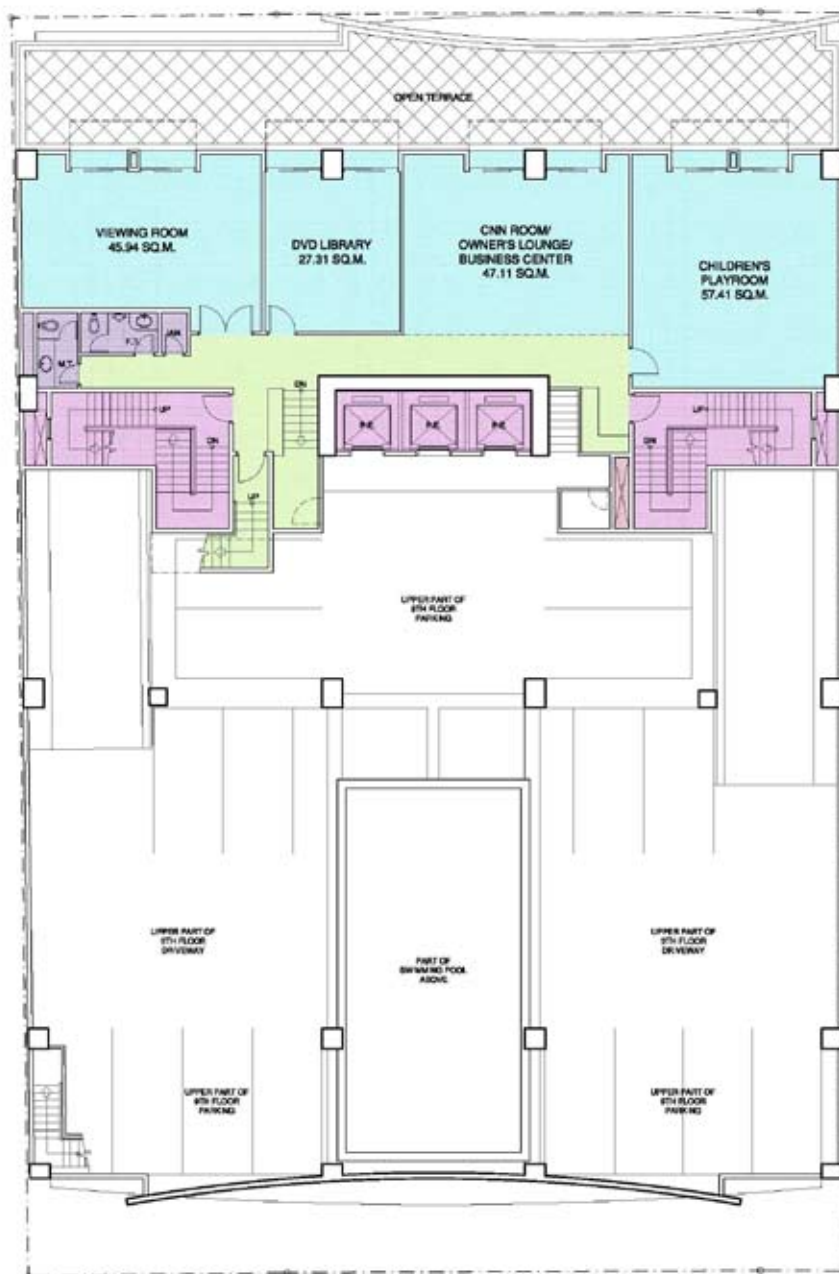


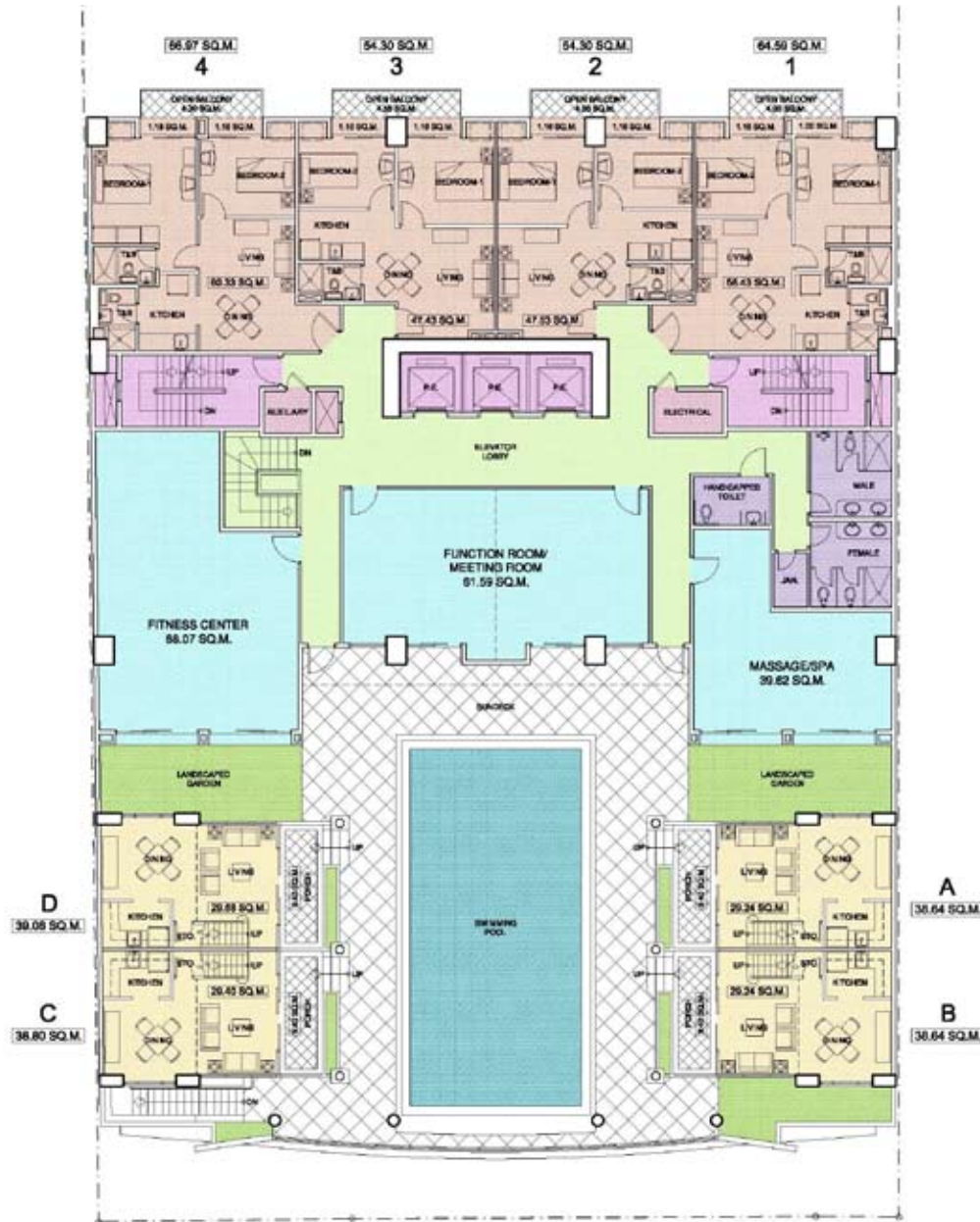
- Entrance faces De la Costa Street
- Double height lobby
- Porte-cochere driveway entrance
- 6 commercial spaces
- 3 high-speed elevators
- Potential locators: coffee shops, high-end convenience stores, commercial banks
- Concierge

ground floor layout



- Viewing / THX Room
- Library / Magazine / DVD renting room:
 - *Oprah's Book Club, Popular Men & Women's Magazines, Fashion & Tech Magazines*
 - *Library is stocked with current newspapers and popular magazines*
 - *Place where residents can unwind and meet fellow residents after work*
- Owner's Lounge, Business Center
- Children's Playroom & Day-Care Center

5th - amenities floor layout



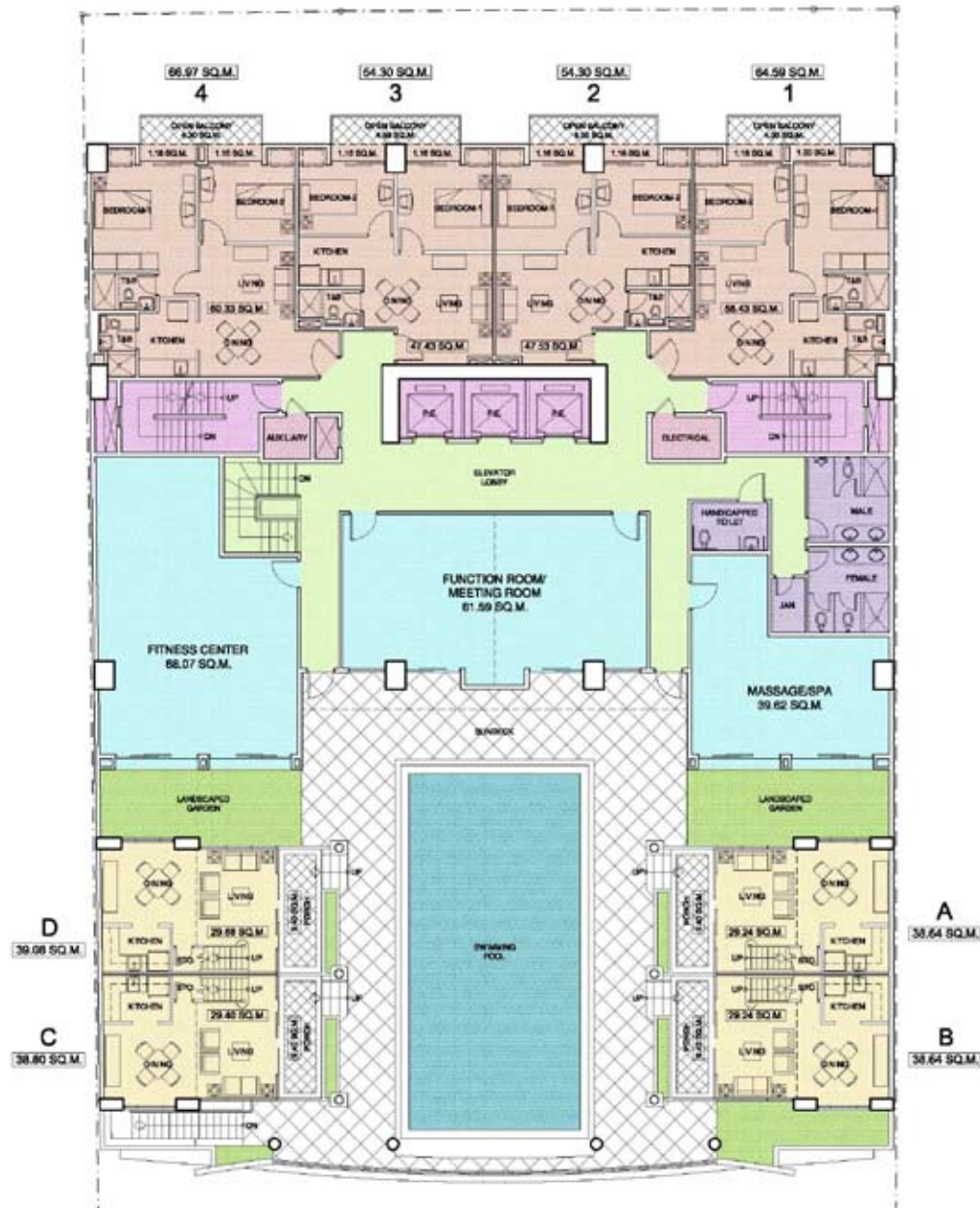
- Swimming Pool
- 4 "Skyloft" Units overlooking the pool
- Fitness Center
- Function / Meeting Room
- Massage / Spa Room
- Four 2-BR Residential Units facing Buendia

6th floor layout skylofts & other amenities

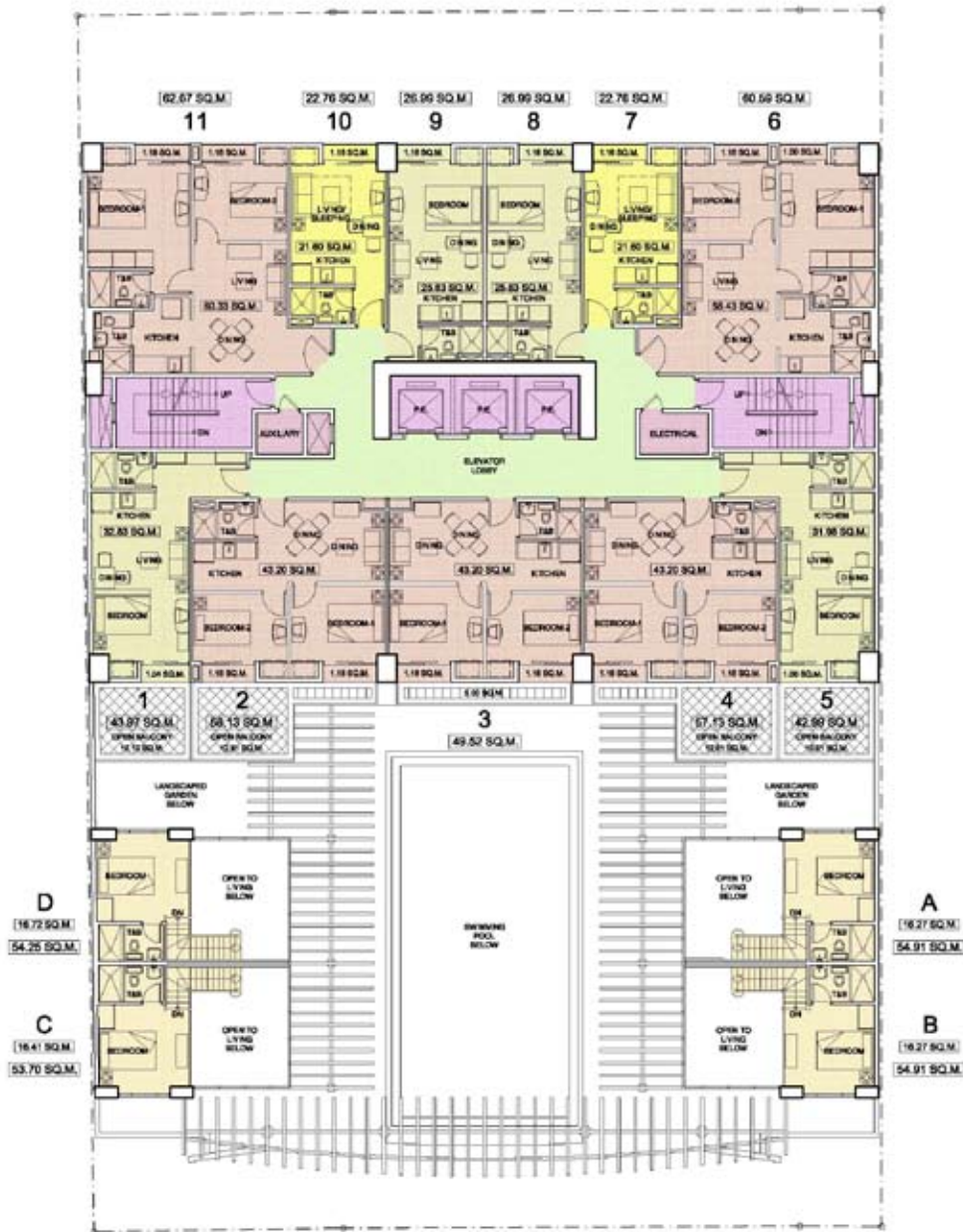


6th floor sky lofts and amenities floor plan

- 4 Double-height sky loft units overlooking the pool

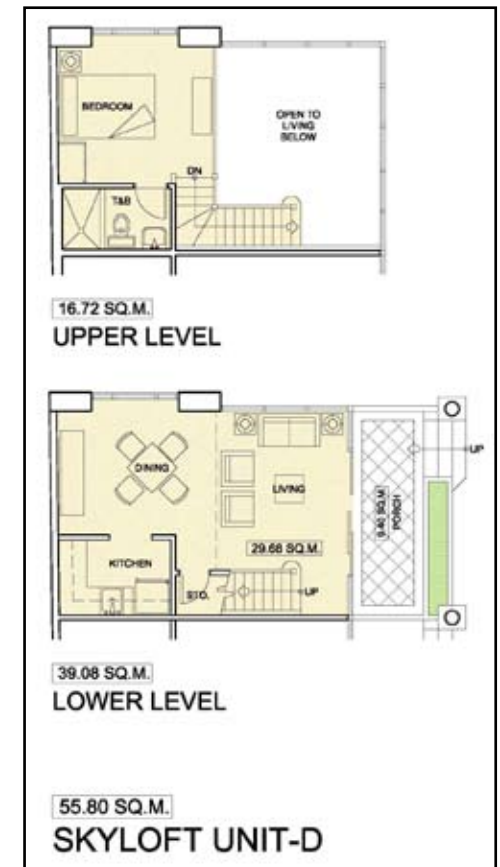
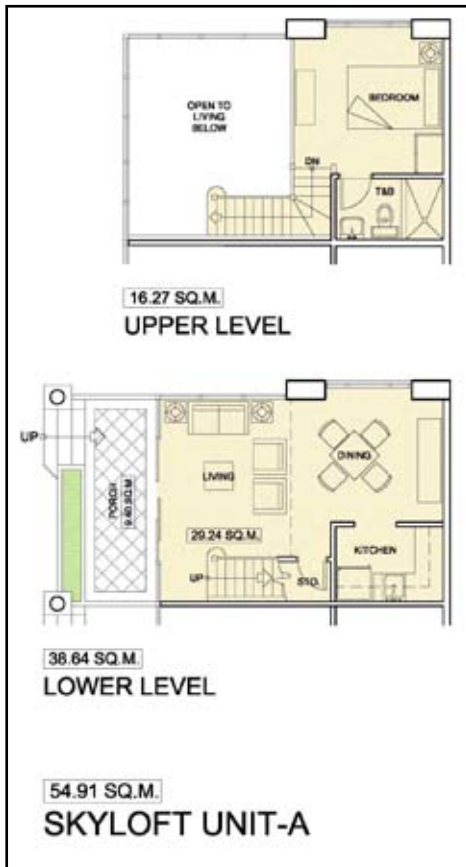


7th floor plan

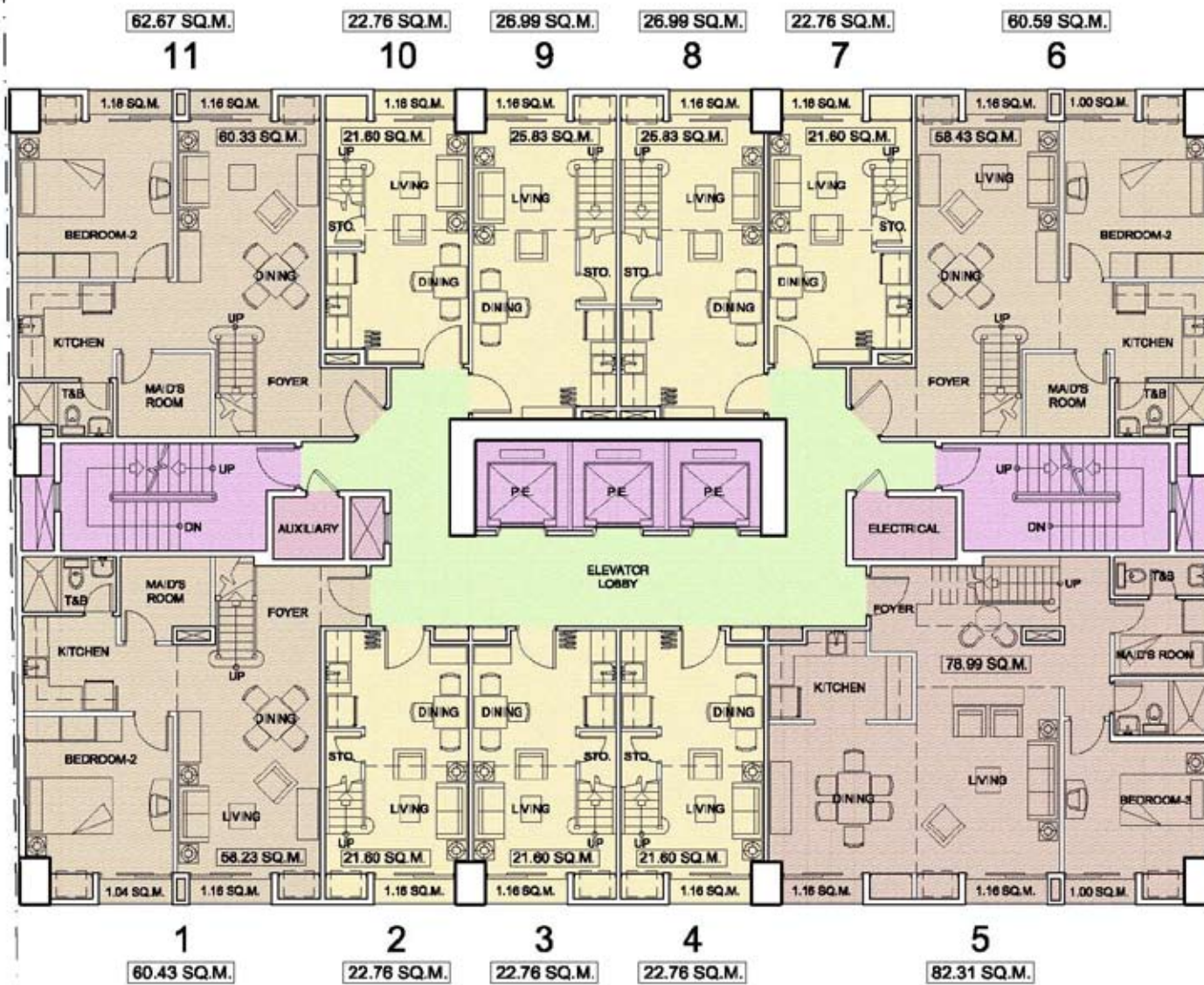


- contains 2nd level of skylofts
- 11 residential units
- units 701 to 705 overlook the pool
- units 706 to 711 face Buendia

Skylofts A-D unit plans



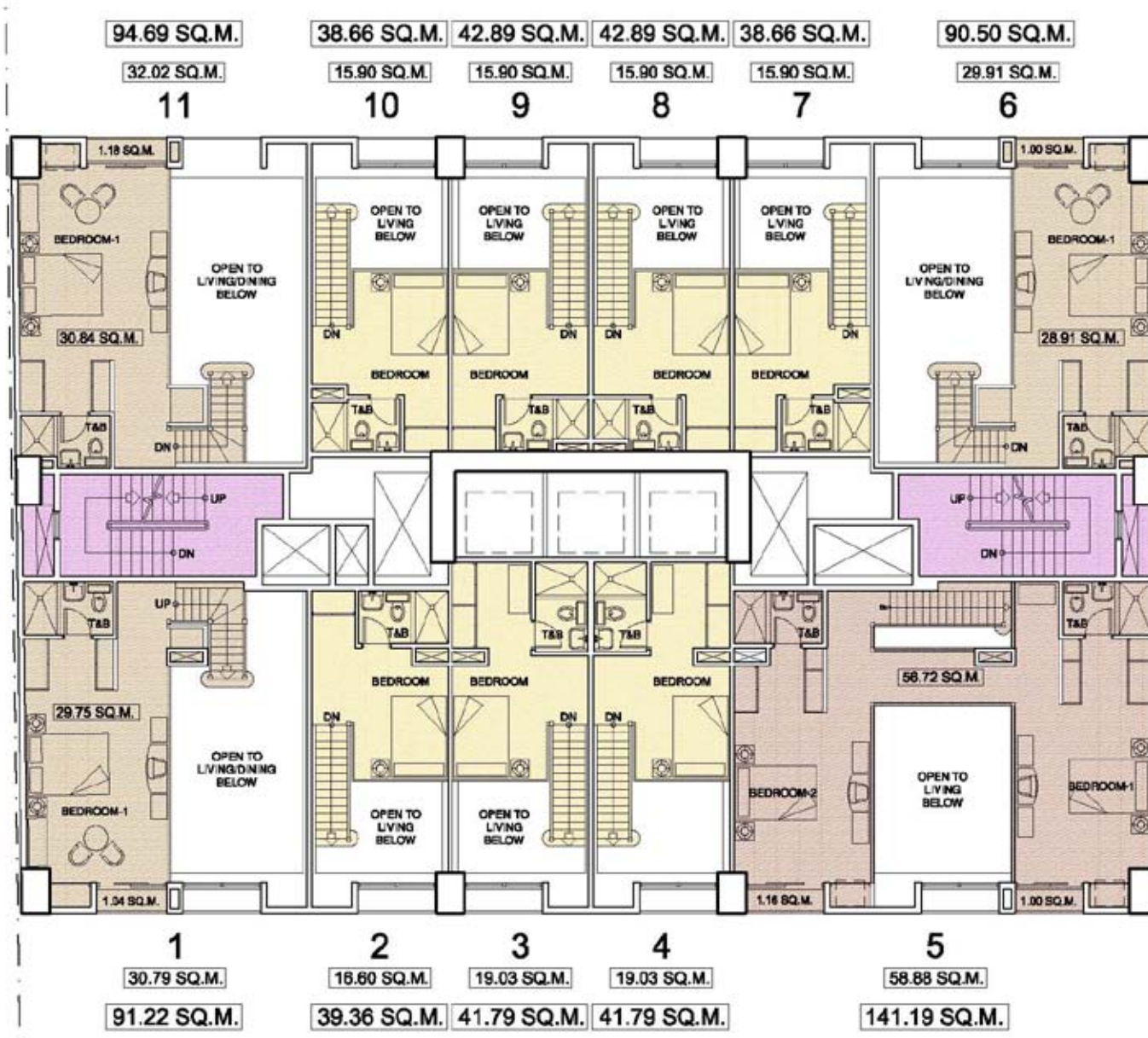
8th floor – lower level loft floor layout



- 7 One-bedroom Lofts
- 3 Two bedroom Lofts
- 1 Three Bedroom Loft

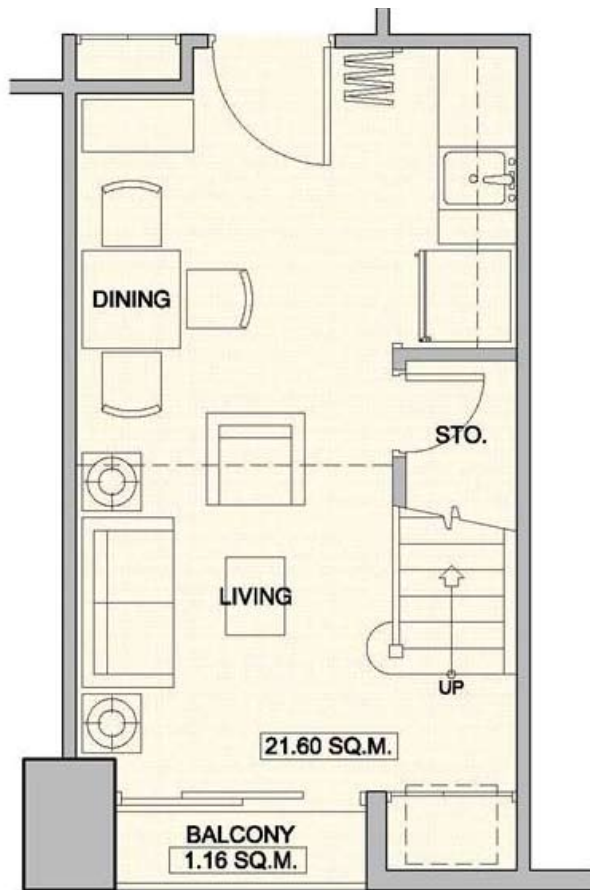


8th floor – upper level left floor layout





one bedroom loft unit



22.76 SQ.M.
LOWER LEVEL



16.60 SQ.M.
UPPER LEVEL

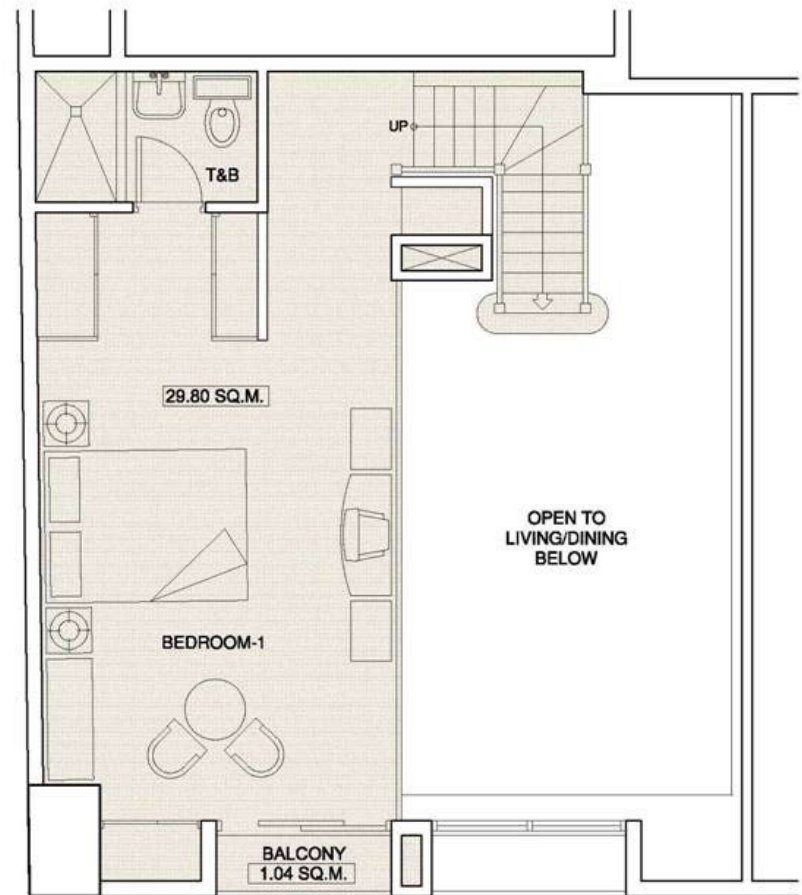
- Two storey Loft Unit
- 22.76 sqm on the first level,
16 sqm on the 2nd level
- Total is 39.36 sqm



two bedroom loft unit



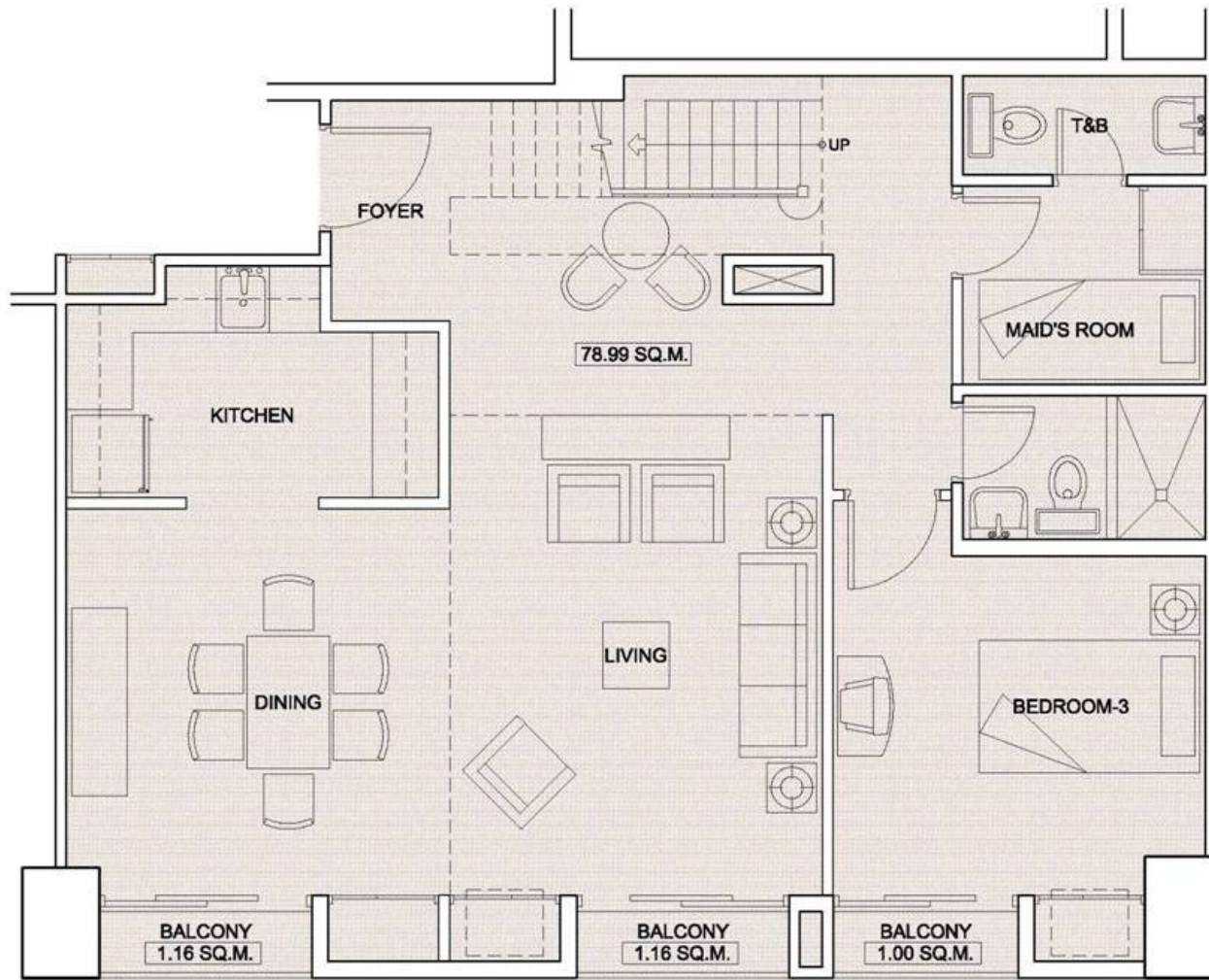
60.48 SQ.M.
LOWER LEVEL



30.84 SQ.M.
UPPER LEVEL



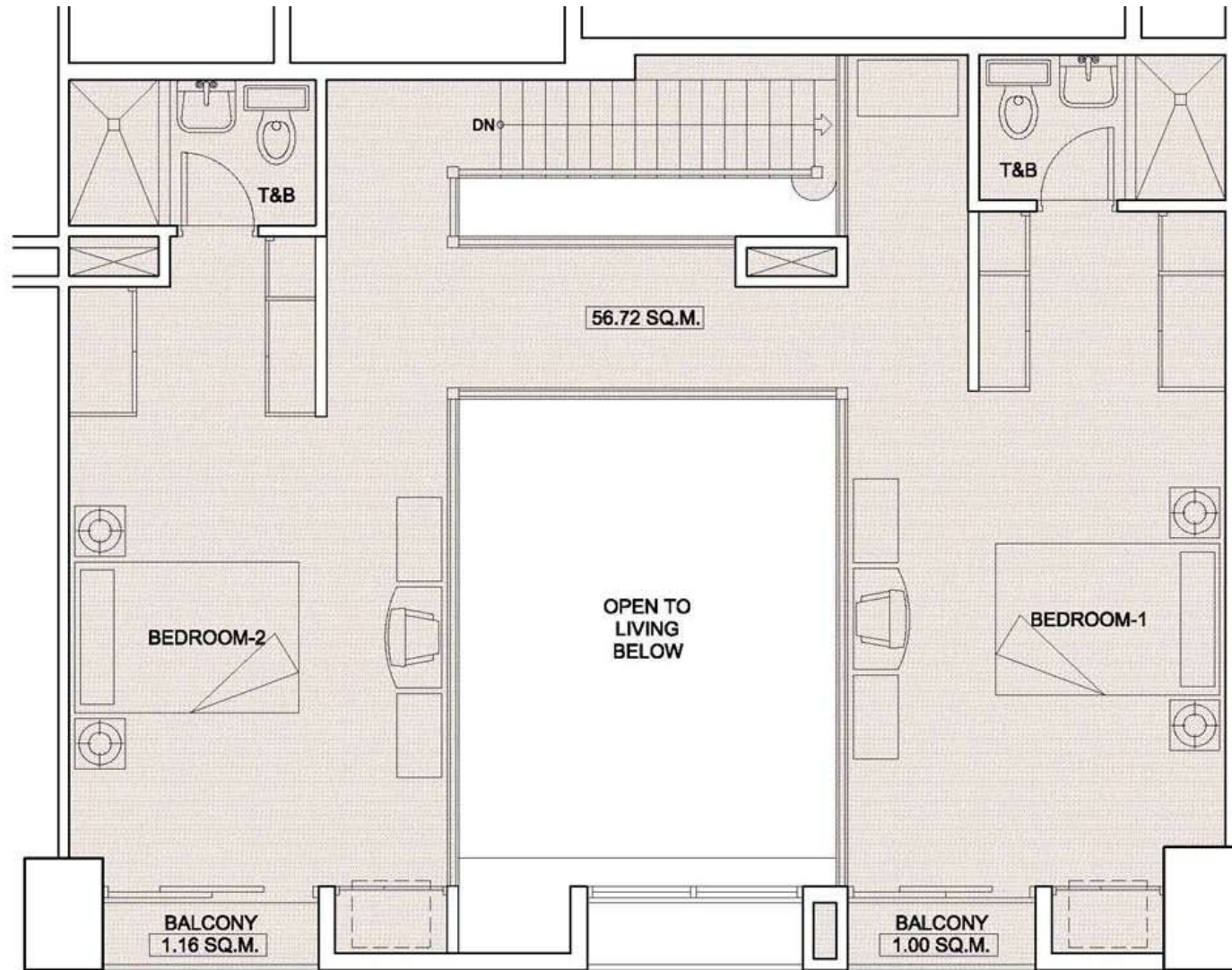
three bedroom loft unit lower level



82.31 SQ.M.



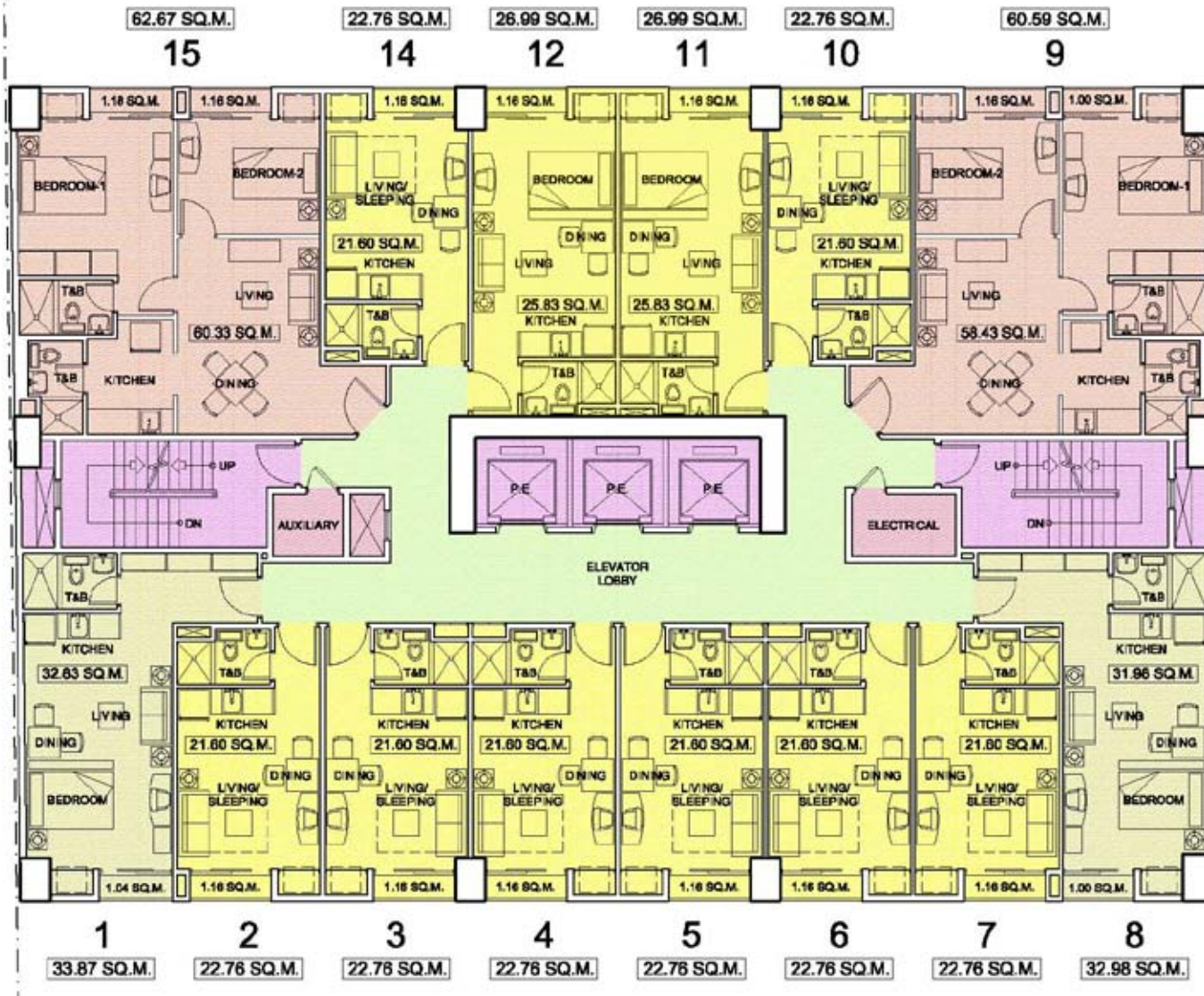
three bedroom loft unit upper level



58.88 SQ.M.

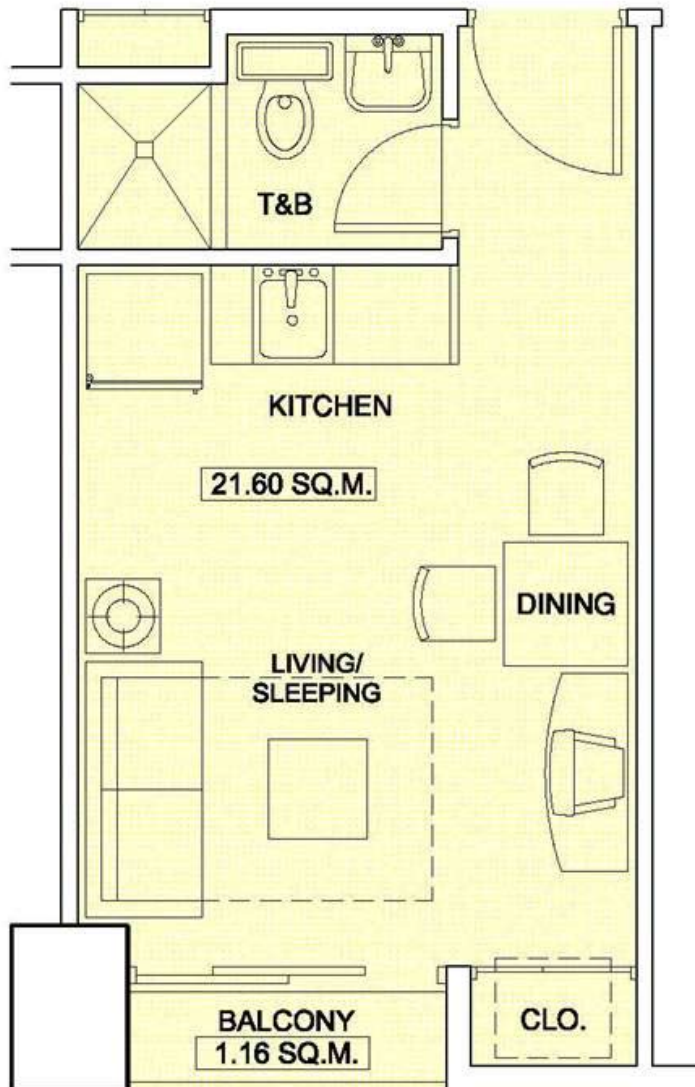


9th - 35th typical floor layout



- 10 studio units per floor (dark yellow)
- 2 One bedroom units (light yellow)
- 2 Two bedroom units (pink)

studio unit



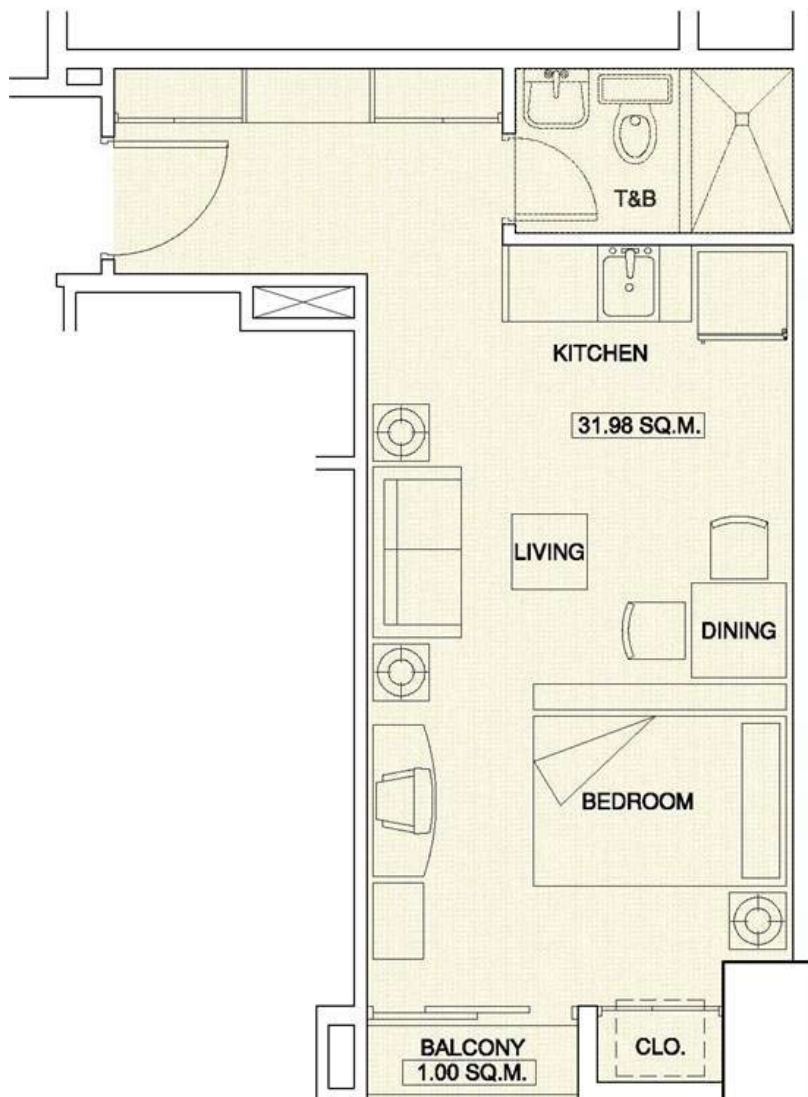
32.76 SQ.M.

STUDIO UNIT

- 10 studio units per floor
- Average unit size similar to Bel-Air Soho units
- Perfect for people who work in Makati
- 2 studio units can be combined to form a 45 sqm 2-BR unit or a 49.75 sqm 2-BR unit



one bedroom unit



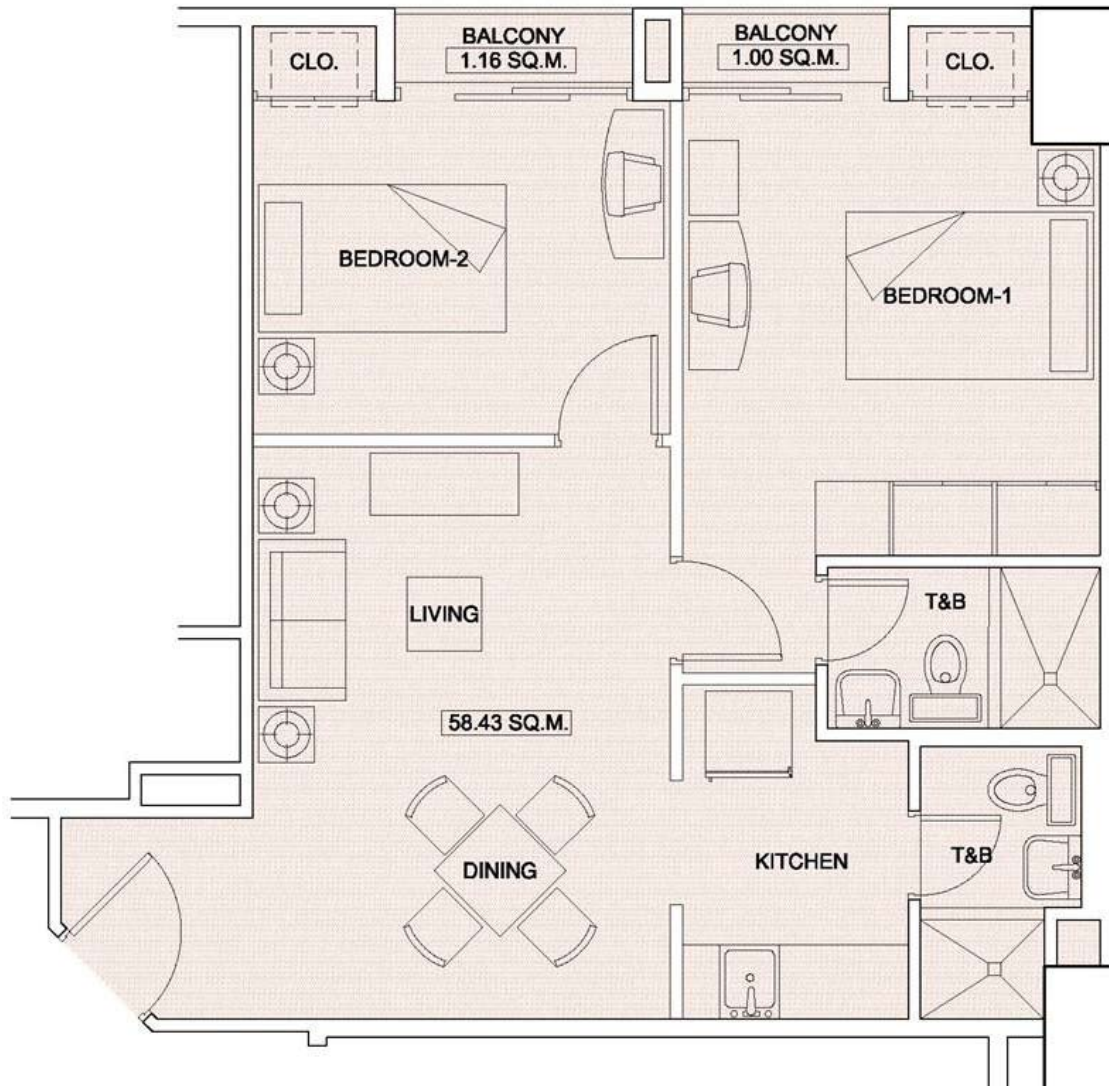
- 2 units per floor
- Units 1 & 8
- Corner units
- 32.98 sqm each including the balcony
- Similar in size to Soho Central's typical 1-BR units

32.98 SQ.M.

ONE BEDROOM UNIT



two bedroom standard unit

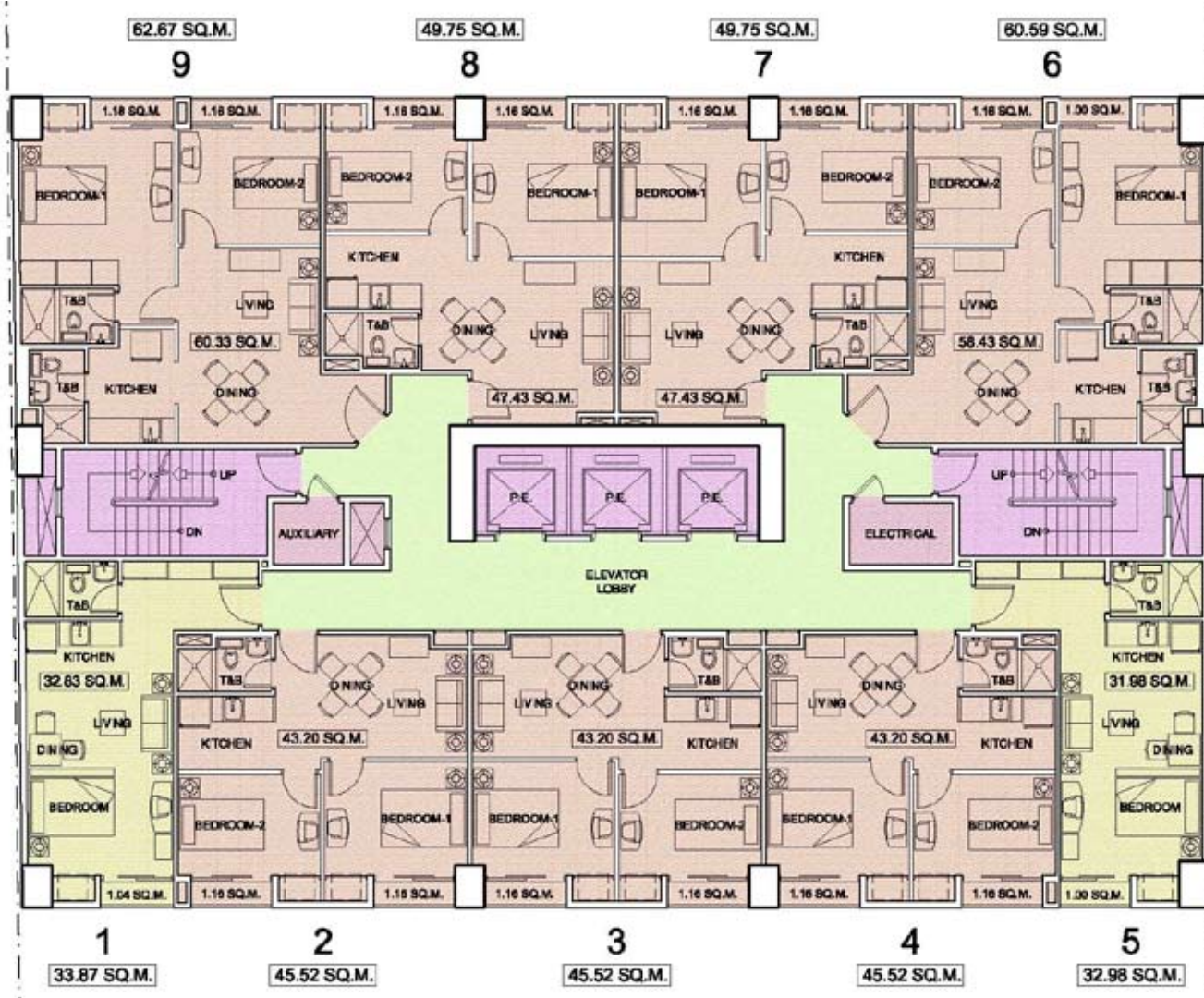


- Each unit has 2 balconies
- Two 2-BR units per floor
- Units 9 & 15
- Similar in size to Soho Central's typical 2-BR units

60.59 SQ.M.

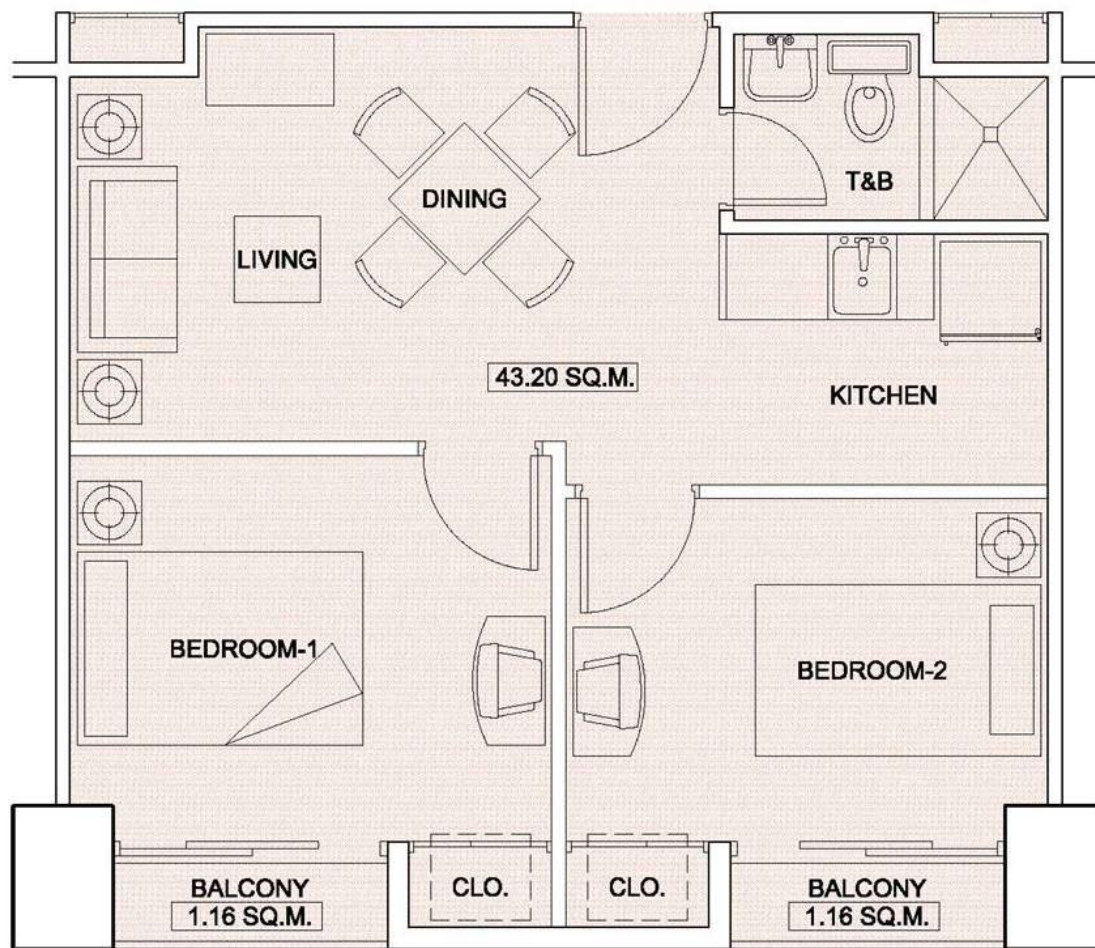
TWO BEDROOM UNIT

36th - 37th combined unit floor layout



- Same floor plate as typical floor
- Allows buyers flexibility of combining two studio units into one 2-BR unit
- Units from the typical floorplan which can be combined include:
 - 2 & 3
 - 4 & 5
 - 6 & 7
 - 10 & 11
 - 12 & 14
- Corner 2-BR and 1-BR units are the same as typical floor layout (9-35th floor layout)

two bedroom combined unit



- Selected adjacent studio units can be combined to form a single 45 sqm 2BRsuite
- Units which can be combined are:
 - 2 & 3
 - 4 & 5
 - 6 & 7
 - 10 & 11
 - 12 & 14
- A 45 sqm 2-BR offers terrific value for money by providing for 2 bedrooms at an affordable price.